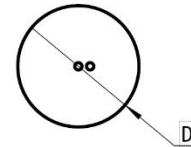
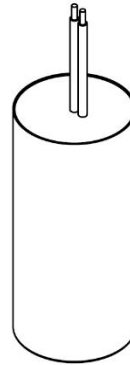


外形图 Outline Drawing



应用

Applications

- ◆ 低压无功补偿
- ◆ 脉冲电源
- ◆ 脉冲医疗设备
- ◆ Low voltage reactive power compensation
- ◆ Pulse Power
- ◆ Pulse medical equipment



特点

- ◆ 超薄型，低高度，安全膜设计
- ◆ 低等效串联电阻，高纹波电流处理能力
- ◆ 低电感
- ◆ 寿命时间长
- ◆ 自愈特性
- ◆ 树脂灌封

Features

- ◆ Slim line, Low building height, segmented metalized-film design
- ◆ Low ESR, high ripple current handling capabilities
- ◆ Low ESL
- ◆ Long Lifetime
- ◆ Self-healing property
- ◆ Filled with resin



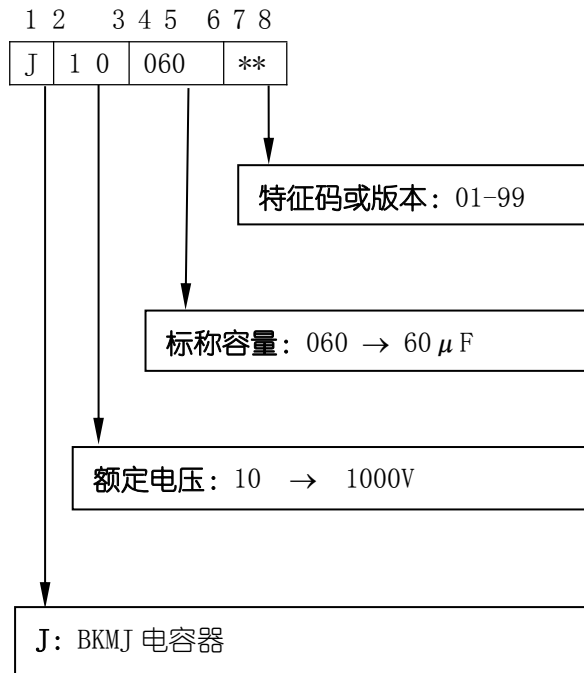
新能源电容产品编码规则 (8 位)

The 8 digits part number is formed as follow.

型号代码:

Model type code:

BKMJ 脉冲电容器



范例: BKMJ 电容器 1000V100 μF  
 编码: J10060\*\*



技术要求  
Specifications

引用标准 Reference Standard	JB/T8168 / IEC60384-17			
气候类别 Climatic Category	40/70/21			
工作温度范围 Operating Temperature Range	-40℃~55℃ ( $\theta_{hs} \leq 75^\circ\text{C}$ ) $\theta_{hs} = 55^\circ\text{C}$			
额定电压 ( $U_N$ ) Rated Voltage 55℃	1KV	1.4KV	1.6KV	2KV
容量范围 ( $C_N$ ) Capacitance Range ( $C_N$ )	50-200 $\mu\text{F}$			
容量偏差 Capacitance Tolerance	$\pm 5\%$ (J)、 $\pm 10\%$ (K)			
耐电压 Voltage Proof	1.2 $U_N$ (10S, $20 \pm 5^\circ\text{C}$ )			
绝缘电阻 Insulation Resistance ( $R \times C_N$ )	$\geq 10,000\text{S}$ (@20℃, 500Vdc, 1min)			
自感 ( $L_s$ ) Self Inductance ( $L_s$ )	< 1nH per mm of lead spacing			
频率 (f) Frequency (f)	50Hz~10KHz			
最大峰值电流 ( $\hat{I}$ ) Maximum peak current ( $\hat{I}$ )	$\hat{I} = C_N * dv/dt$			
预期寿命 Expected Lifetime	30,000 hours @ $U_N$ , $\theta_{hs} = 55^\circ\text{C}$			



## 技术参数 Technical data

Un1000Vdc							
$C_N$	L	D	Outout	dV/dt	I <sub>rms</sub>	ESR	Part Number
$\mu F$	mm	mm	AWG	V/ $\mu s$	A	m $\Omega$	
25	72	45	16#	35	15	18	J10025**
70	93	45	16#	35	20	12	J10070**
100	56	95	4mm <sup>2</sup>	35	25	10	J10100**

Un1200Vdc							
$C_N$	L	D	Outout	dV/dt	I <sub>rms</sub>	ESR	Part Number
$\mu F$	mm	mm	AWG	V/ $\mu s$	A	m $\Omega$	
30	72	45	16#	35	15	14	J12030**
70	70	65	16#	35	22	11	J12070**
100	95	65	4mm <sup>2</sup>	35	25	9	J12100**

Un1400Vdc							
$C_N$	L	D	Outout	dV/dt	I <sub>rms</sub>	ESR	Part Number
$\mu F$	mm	mm	AWG	V/ $\mu s$	A	m $\Omega$	
60	95	65	16#	35	25	11.5	J14060**
100	135	65	4mm <sup>2</sup>	35	35	9.5	J14100**
150	140	76	4mm <sup>2</sup>	35	50	5.8	J14150**

\*以上仅列出常规尺寸，可依客户要求定制电容。

