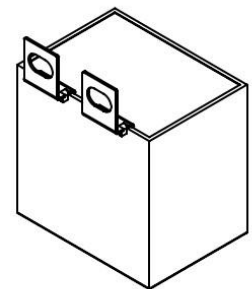
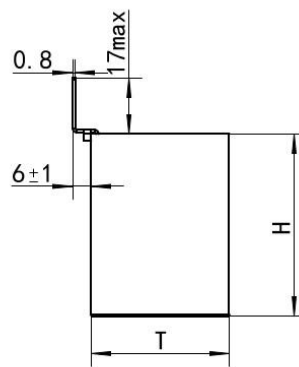
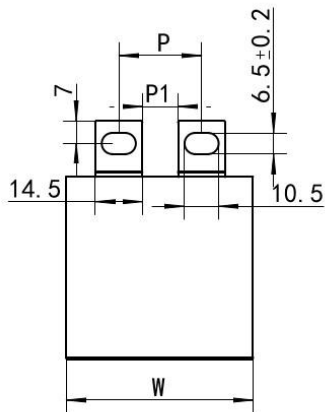
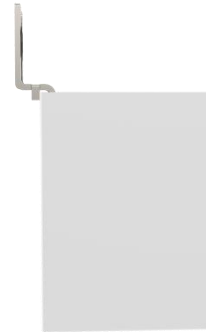


外形图 Outline Drawing

缓冲吸收电容器

DC-Link Capacitor for PCB

腰孔端子引出:



## 应用

## Applications

- ◆ 广泛应用于高压高频脉冲电路中
  - ◆ 电视机中 S 校正和行逆程波形和显示器
  - ◆ 电子镇流器和节能灯
  - ◆ 吸收和 SCR 整流电路 High
  - ◆ 适用于各种规格的 IGBT 缓冲吸收保护
- It is widely used in high voltage and high frequency pulse circuit  
S-corrected and reverse waveforms and displays in television sets  
Electrical Ballast  
Absorption and SCR rectifier circuit  
High  
Suitable for all kinds of IGBT snubber protection



## 特征

- ◆ 双面金属化聚丙烯引出
- ◆ 损耗小，内部温升小
- ◆ 负电容量温度系数
- ◆ 优异的阻燃性能
- ◆ 可承受很大的峰-峰值电流  $I_{pp}$  和高频有效值电流  $I_{rms}$

## Features

- ◆ Double-sided metallized polypropylene extraction
- ◆ Small loss, small internal temperature rise
- ◆ Temperature Coefficient of negative capacitance
- ◆ Excellent flame retardancy
- ◆ Can withstand large peak-peak current  $I_{PP}$  and high frequency RMS current  $I_{RMS}$



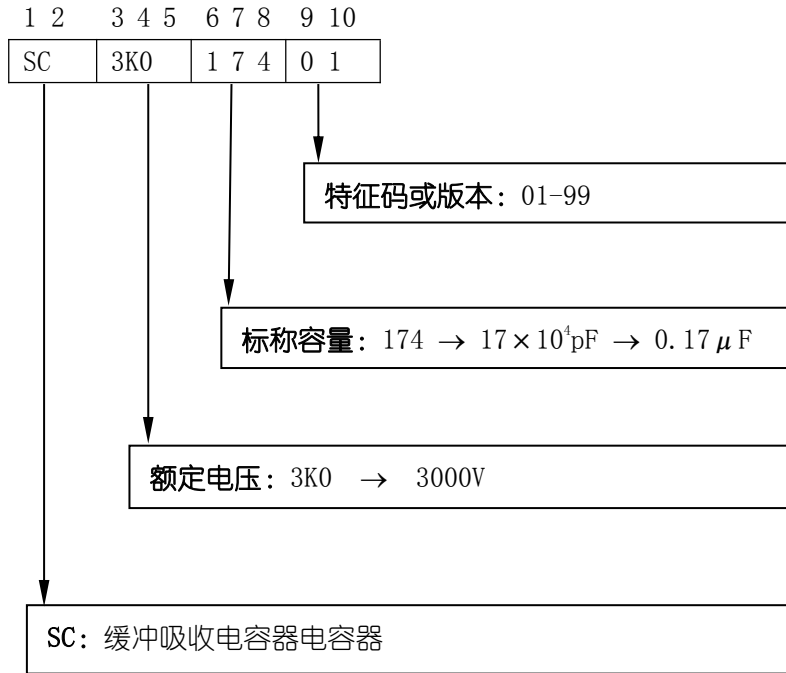
新能源电容产品编码规则 (10 位)

The 10 digits part number is formed as follow.

型号代码:

Model type code:

ST\*\*\*: 缓冲吸收电容器 (Buffer absorption capacitor)



范例: 缓冲吸收电容器 3000V0.17  $\mu\text{F}$   
 编码: SC3K0174\*\*



## 技术要求 Specifications

引用标准	GB/T 17702 idt IEC 61071, GB/T 2693 idt IEC 60384-1					
气候类别 Climatic Category	40/105/56					
工作温度范围 Operating Temperature Range	-40 ℃~85℃ (+85 ℃R (dc)) to +85℃: decreasing (+75 ℃ r U to +85℃: decreasing fa R (ac))					
额定电压 (Un) Rated Voltage 85℃	700V	1000V	1200V	1700V		
	2000V	3000V	5000V			
容量范围 Capacitance Range	0.1~8μF					
容量偏差 Capacitance Tolerance	±2% (G), ±3% (H), ±5% (J), ±10% (K), ±20% (M)					
耐电压 Voltage Proof	1.5 UN (10S, 20±5℃)					
绝缘电阻 Insulation Resistance (IR×Cn)	≥10,000S(20℃, 100Vdc, 1min)					
自感 (Ln) Self Inductance (Ln)	< 1nH per mm of lead spacing					
最大峰值电流 $\hat{I}$ (A) Maximum peak current $\hat{I}$ (A)	$\hat{I}=C_n*dV/dt$					
预期寿命 Expected Lifetime	100,000 hours @ Un, $\theta_{hs}=70℃$					
最大脉冲爬升速率 (dV/dt): 若实际工作电压 U 比额定电压 UR 低, 电容器可工作在更高的 dV/dt 场合, 这样 dv/dt 允许值应为右表值乘以 UR/U	UR (V)	dV/dt (V/us)				
		P=7.5	P=10	P=15	P=22.5	P=27.5
	250	1200	1000	550	250	200
	400	1800	1500	900	500	300
	630	3200	3200	2500	1500	900
	1000	6000	6000	3300	2100	1000
	1600	--	--	6000	3000	2000
2000	--	--	10000	5000	2200	



## 技术参数 Technical data

Cn ( $\mu$ F)	Outline size(mm)			ESR @1KHZ (m $\Omega$ )	ESL (nH)	dv/dt (V/ $\mu$ S)	Ipk (A)	Irms @40 $^{\circ}$ C /10KHZ (A)	Part number
	W( $\pm$ 1)	T( $\pm$ 1)	H( $\pm$ 1)						
Un 700V.DC, Urms 400V.AC, Us 1050V									
0.47	42.5	24.5	27.5	12	25	500	235	8	SC70047401
0.68	42.5	24.5	27.5	10	25	480	326.4	10	SC70068401
1	42.5	24.5	27.5	8	24	450	450	12	SC70001601
1.5	42.5	33.5	35.5	7	25	430	645	5	SC70015501
2	42.5	33	35.5	6	24	420	840	15	SC70002601
2.5	42.5	33	45	6	23	400	1000	18	SC70025501
3	42.5	33	45	5.5	22	380	1140	20	SC70003601
3	57.5	30	45	5	26	350	1050	22	SC70003602
3.5	42.5	33	45	5	23	350	1225	25	SC70035501
3.5	57.5	30	45	6	25	300	1050	22	SC70035502
4.7	57.5	35	50	5	28	280	1316	25	SC70047502
5.6	57.5	38	54	4	30	250	1400	25	SC70056501
6	57.5	38	54	3.5	33	230	1380	28	SC70006601
6.8	57.5	42.5	56	3.2	32	220	1496	32	SC70068502
8	57.5	42.5	56	2.8	30	200	1600	33	SC70008601

Cn ( $\mu$ F)	Outline size(mm)			ESR @1KHZ (m $\Omega$ )	ESL (nH)	dv/dt (V/ $\mu$ S)	Ipk (A)	Irms @40 $^{\circ}$ C /10KHZ (A)	Part number
	W( $\pm$ 1)	T( $\pm$ 1)	H( $\pm$ 1)						
Un 1000V.DC, Urms 500V.AC, Us 1500V									
0.47	42.5	24.5	27.5	11	25	1000	470	10	SC1K047401
0.68	42.5	24.5	27.5	8	25	800	544	12	SC1K068401
1	42.5	33.5	35.5	6	24	800	800	15	SC1K001601
1.5	42.5	33	45	6	24	700	1050	15	SC1K015501
2	42.5	33	45	5	22	700	1400	20	SC1K002601
2.5	57.5	30	45	5	30	600	1500	22	SC1K025501
3	57.5	35	50	4	30	600	1800	25	SC1K003601
3.3	57.5	35	50	3.5	28	550	1815	25	SC1K033501
3.5	57.5	38	54	3.5	28	500	1750	25	SC1K035501
4	57.5	38	54	3.2	26	500	2000	28	SC1K004601
4.7	57.5	42.5	56	3	25	420	1974	30	SC1K047502
5.6	57.5	42.5	56	2.8	24	400	2240	32	SC1K056501



Cn ( $\mu$ F)	Outline size(mm)			ESR @1KHZ (m $\Omega$ )	ESL (nH)	dv/dt (V/ $\mu$ S)	Ipk (A)	Irms @40°C /10KHZ (A)	Part number
	W( $\pm$ 1)	T( $\pm$ 1)	H( $\pm$ 1)						
Un 1200V.DC, Urms 500V.AC, Us 1500V									
0.47	42.5	24.5	27.5	11	24	1200	564	10	SC1K247401
0.68	42.5	33.5	35.5	7	23	1100	748	12	SC1K268401
1	42.5	33.5	35.5	6	22	800	800	14	SC1K201601
1.5	42.5	33	45	5	20	800	1200	15	SC1K215501
2	57.5	30	45	4	30	750	1500	20	SC1K202601
2.5	57.5	35	50	4	28	700	1750	25	SC1K225501
3	57.5	35	50	4	27	600	1800	25	SC1K203601
3.3	57.5	38	54	4	27	550	1815	28	SC1K233501
3.5	57.5	38	54	3.5	25	500	1750	28	SC1K235501
4	57.5	42.5	56	3.5	25	450	1800	30	SC1K204601

Cn ( $\mu$ F)	Outline size(mm)			ESR @1KHZ (m $\Omega$ )	ESL (nH)	dv/dt (V/ $\mu$ S)	Ipk (A)	Irms @40°C /10KHZ (A)	Part number
	W( $\pm$ 1)	T( $\pm$ 1)	H( $\pm$ 1)						
Un 1700V.DC, Urms 575V.AC, Us 2250V									
0.33	42.5	24.5	27.5	12	25	1300	429	9	SC1K733401
0.47	42.5	33.5	35.5	10	24	1300	611	10	SC1K747401
0.68	42.5	33.5	35.5	8	23	1300	884	12	SC1K768401
1	42.5	33	45	7	22	1200	1200	15	SC1K701601
1.5	42.5	33	45	6	22	1200	1800	18	SC1K715501
1.5	57.5	30	45	5	31	1200	1800	20	SC1K715502
2	57.5	30	45	5	30	1100	2200	22	SC1K702601
2.5	57.5	35	50	4	28	1100	2750	25	SC1K725501
3	57.5	38	54	4	27	700	2100	25	SC1K703601
3.3	57.5	38	54	3.8	26	600	1980	28	SC1K733501
3.5	57.5	42.5	56	3.5	25	500	1750	30	SC1K735501
4	57.5	42.5	56	3.2	25	450	1800	32	SC1K704601



Cn ( $\mu$ F)	Outline size(mm)			ESR @1KHZ (m $\Omega$ )	ESL (nH)	dv/dt (V/ $\mu$ S)	Ipk (A)	Irms @40 $^{\circ}$ C /10KHZ (A)	Part number
	W( $\pm$ 1)	T( $\pm$ 1)	H( $\pm$ 1)						
Un 2000V.DC, Urms 700V.AC, Us 3000V									
0.22	42.5	24.5	27.5	15	25	1500	330	10	SC2K022401
0.33	42.5	33.5	35.5	12	24	1500	495	12	SC2K033401
0.47	42.5	33.5	35.5	11	23	1400	658	15	SC2K047401
0.68	42.5	33	45	8	22	1200	816	18	SC2K068401
0.68	57.5	30	45	7	30	1100	748	20	SC2K068402
0.82	42.5	33	45	7	28	1200	984	22	SC2K082401
1	57.5	30	45	6	28	1100	1100	25	SC2K001601
1.5	57.5	35	50	5	25	1000	1500	28	SC2K015501
2	57.5	38	54	5	24	800	1600	28	SC2K002601
2.2	57.5	42.5	56	4	23	700	1540	32	SC2K022502

Cn ( $\mu$ F)	Outline size(mm)			ESR @ 1KHZ (m $\Omega$ )	ESL (nH)	dv/dt (V/ $\mu$ S)	Ipk (A)	Irms @40 $^{\circ}$ C /10KHZ (A)	Part number
	W( $\pm$ 1)	T( $\pm$ 1)	H( $\pm$ 1)						
Un 3000V.DC, Urms 750V.AC, Us 4500V									
0.15	42.5	33	45	18	28	2500	375	25	SC3K015401
0.22	42.5	33	45	15	27	2200	484	28	SC3K022401
0.22	57.5	35	50	15	25	2000	330	20	SC3K022402
0.33	57.5	35	50	12	24	1800	495	20	SC3K033401
0.47	57.5	38	54	11	23	1600	752	22	SC3K047401
0.68	57.5	42.5	56	8	22	1500	1020	28	SC3K068401

特殊需要可根据客户要求另行设计

